



Une filiale de DOCAPOSTE

Impact of the lookback period, age and gender on the estimation of diabetes and heart failure incidence on medico-administrative databases

Vabre C¹, Naïmi N¹, Fernandes J², Neuraz A³, Longin J⁴, Gosselin R¹, Pages N¹, Raguideau F¹

1. Heva, Lyon, France ; 2. CH Côte Basque, Bayonne, France ; 3. Stane, Lyon, France ;
4. Perle expertise, Lyon, France

ISPE 2025
Lightning Session 2 - Monday, August 25, 2025



LA POSTE
SANTÉ &
AUTONOMIE

Declaration of interest

Vabre C., Naïmi N., Gosselin R., Pages N. and Raguideau F. are employees of Heva

Fernandes J. is employee of the hospital center of Cote Basque

Neuraz A. is employee of Stane

Longin J is founder of PERLE Expertise

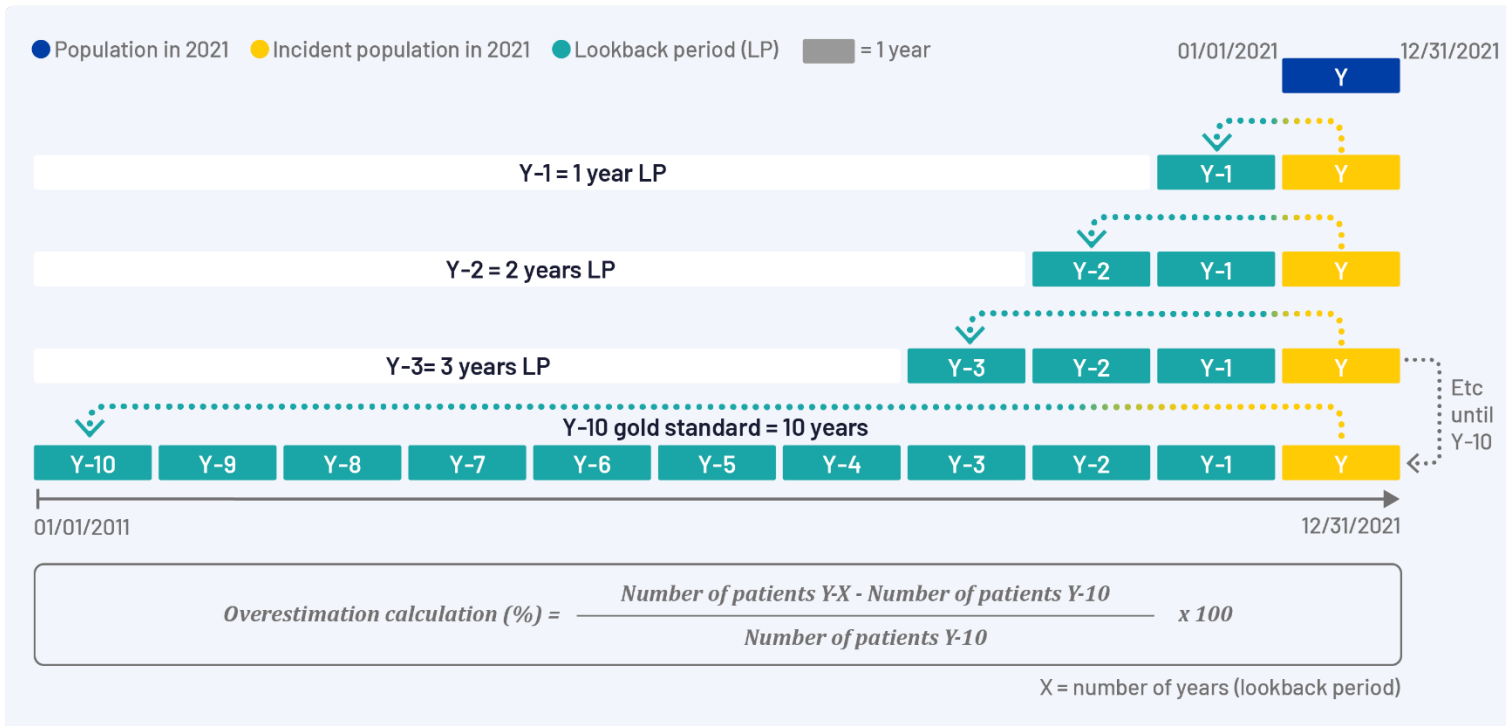
Funding

The work presented in this study was funded by Heva

Medico-administrative databases do not contain the date of clinical diagnosis. The incident patients are defined as those without any disease-identifying criterion during a certain period prior to the index date, the lookback period (LP).

What is the impact of the LP duration on the number of incident patients?

Example with heart failure (HF) using French national Health data System (ESND - 2/100th representative sample)



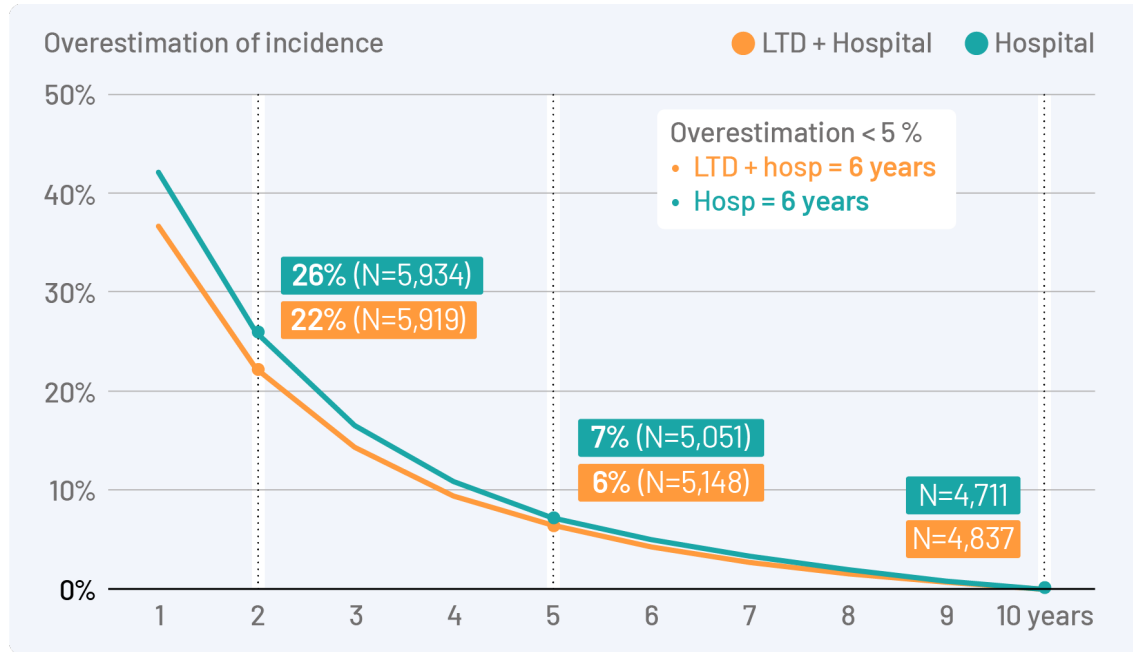
HF patients in 2021 was identified using published algorithm:

- Inpatient diagnosis for HF (ICD-10 code I50)
- or HF registered by a physician as a Long Term Disease (LTD) requested full care reimbursement

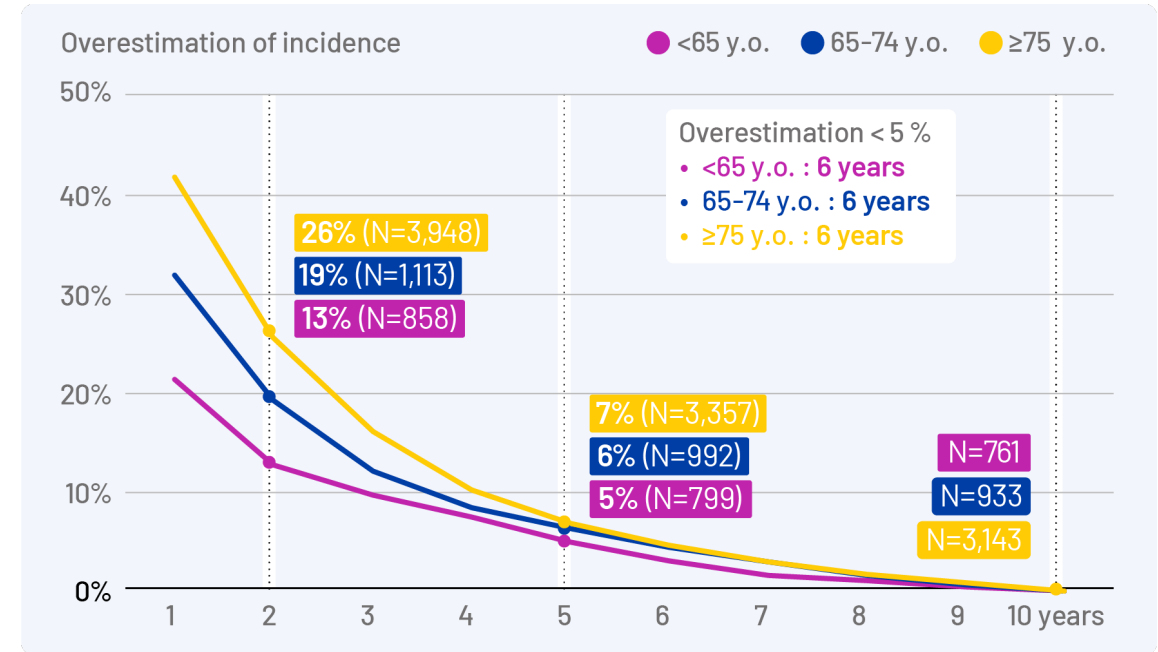
= 12,905 patients

The number of incident patients in 2021 was estimated for each LP adding 1 year of Lookback Period (LP) and compared to a « gold standard » of 10 years

By data source



By age



Conclusion

These results show that, for heart failure, a LP of six years is required to ensure an incidence overestimation of less than 5%, regardless of age, sex, or data source.

However, both the optimal LP and the relevant predictive factors may differ across other pathologies.